

The Seashore Code

When on the shore, please remember to follow the Seashore Code...

Exploring the seashore is fun, but please remember to...

- Take nothing but photographs, leaving live animals and plants where you found them.
- Carefully replace any overturned rocks to the same place; otherwise plants and animals may die.
- Leave attached seaweed in place, collect loose weed from along the strandline.
- Keep seashore activities away from birds' summer breeding grounds between April and July, and their winter roosts between October and March.
- Take your litter home or put it in a bin, 'leave nothing but footprints!'



- Be aware of sharp and slippery rocks, wear shoes and keep your hands free when climbing over rocks.
- Do not jump off cliffs, piers, harbour walls or other high points into the sea (known as Tombstoning). Constantly changing currents, sea depths and hidden rocks mean this practise is dangerous even for people who know the area well.
- Check local beach safety information and byelaws. Anybody needing first aid whilst visiting the Headland should go directly to his or her GP or Bridlington and District Hospital.
- Be prepared; always wear appropriate clothing and footwear.

Safety First

- Check tide times and plan to visit one hour before low tide to avoid being cut off from the shore.
- Take extra care near cliffs. Do not go near the edge, sit underneath or climb the cliff face.

Map Information

Popular walks and things to do

To explore the intertidal area and the rocky shores, both North Landing and South Landing are excellent sites; you could even combine these visits with a walk. The Lighthouse to North Landing route, or the South Landing to Flamborough village, are both moderate walks taking you along the cliff top, to enjoy the spectacular views.

If you are a keen bird watcher the Bempton to Buckton route may be of more interest. This route starts at the RSPB Bempton Cliffs reserve and takes you past the Gannet colony - a sight not to be missed.

To enjoy a pleasant cliff top walk coupled with a trip to Sewerby Hall and Gardens, the circular walk between Sewerby Hall and Danes Dyke is the one for you!

For walks around the Headland, why not follow one of the trail guides produced by East Riding of Yorkshire Council? (www.eastriding.gov.uk/walkd/osdwalks_home_proc).

Flamborough is

- a Special Area of Conservation for its vegetated sea cliffs, chalk reefs and sea cave habitats.
- a Special Protection Area for seabirds.
- a Heritage Coast for its outstanding scenic, historic and scientific interest.
- legally protected for its outstanding nature conservation value.
- important to those who live in the area and also to those who visit for holiday, fishing and walking purposes.

We all need to behave responsibly whilst at Flamborough Head to ensure that it continues to be a special place for current and future generations to enjoy.



Field Trip Code

- Follow your group's health and safety advice.
- Always check the tide times before your visit. www.bbc.co.uk/weather/coast/tides/
- Be aware of coastal hazards in the area.
- Organise safety equipment for each group.
- Set clear limits, with a timetable of activities.
- Wear suitable clothing and be prepared for changeable weather.
- Return wildlife to where you found it.



Contact Information

Emergency Contacts

All Emergency Services	999	
Environment Agency Floodline	0845 988 1188	www.environment-agency.gov.uk
Humberside Police	0845 6060222	www.humberside.police.uk
Maritime and Coastguard Agency	01262 672317	www.mcga.gov.uk
North Yorkshire Police	0845 6060247	www.northyorkshire.police.uk

Useful Contacts

Bridlington Harbour Commissioners	01262 670148	www.visit-east-yorkshire.com
Bridlington Tourist Information Centre	01262 673474	www.environment-agency.gov.uk
Environment Agency	01262 851417	www.flamboroughuk.net
Flamborough Environmental Action Group	01904 435500	www.naturalengland.gov.uk
Natural England	01482 393515	www.neseafish.gov.uk
North Eastern Sea Fisheries Committee	0845 122 6999	www.rnli.org.uk
RNLI	01767 680 551	www.rspb.org.uk
RSPB (Royal Society for Protection of Birds)	0870 33 35 999	www.rspca.org.uk
RSPCA	01989 566017	www.mcsuk.org
The Marine Conservation Society	01255 245034	www.trinityhouse.co.uk
Trinity House	01904 659570	www.ywt.org.uk
Yorkshire Wildlife Trust		

Local Authorities

East Riding of Yorkshire Council	01482 393939	www.eastriding.gov.uk
Scarborough Borough Council	01723 232323	www.scarborough.gov.uk
North Yorkshire County Council	0845 8727374	www.northyorks.gov.uk



Flamborough Headland Codes of Conduct



Acknowledgments of photographers:

David Baker · IECOS University of Hull · Leanne Stockdale
 Matt Latham · Michael Horne · Natural England · Neil Paskin
 North Eastern Sea Fisheries Committee · Ray Purser · Robert Jolley · Wolds Ecology

Flamborough Head Management Plan

c/o North Eastern Sea Fisheries Committee
 Town Hall · Bridlington · East Riding of Yorkshire YO16 4LP
 Tel: 01482 393694 Fax: 01482 393699



Voluntary Codes for all coastal users

The Flamborough Head Management Group worked with representatives from each of the activities to write these codes. The purpose of the codes is to encourage responsible use of the coast, whilst providing a safer environment for both locals and tourists to enjoy. Although the codes are voluntary, individuals and clubs are encouraged to support and review them.

Cliff Top Walks

- Always check the weather before setting off.
- Keep away from the cliff edge, as it may be undercut.
- Please take care when walking around the Headland; footpaths can be muddy and may cause you to slip.
- Avoid any disturbance to wildlife and plants. Do not pick plants or flowers on the Headland as many are rare and threatened.
- Use gates and stiles to cross fences or hedges.
- Do not climb over post or wire livestock fences, which can lead to damaged fencing, allowing livestock to escape.
- Please respect the privacy of adjoining properties and landowners.
- Follow the Countryside Code.



Dog Walking

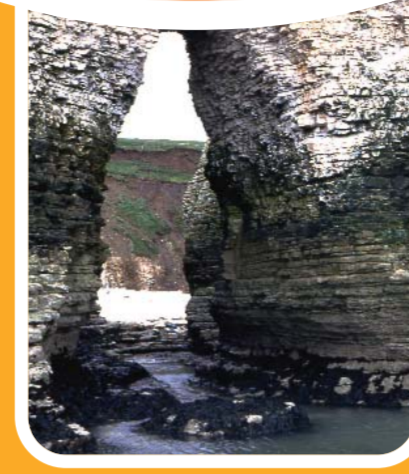
- Dogs should be kept on leads and under control, especially when walking through fields with livestock.
- Please do not allow dogs to run loose on the shore, causing disturbance to roosting or feeding seabirds.
- Please clean up if your dog fouls, using the nearest available waste bin.
- Dogs can frighten and worry people, especially children, please keep yours under control.



Geology

Fossil hunting can be potentially hazardous, make sure you are aware of the local conditions.

- Wear a hard hat, particularly when looking at the chalk cliffs.
- Do not walk on the mudflows - you can get stuck in them.
- Try to conserve the sites by not collecting or hammering, which can cause rockfall.
- Please do not climb the cliffs - they are not stable.
- If you need to collect then please collect from the fallen or loose material on the beaches, leaving plenty behind for others to appreciate.
- Keep detailed records (what, where and when), reporting important findings to local museums or geology groups.



The Headland is classified as a Site of Special Scientific Interest (SSSI) for its coastal geomorphology and geology. Please accept, understand and obey SSSI rules, they are there to protect the geology for future generations.

Bird Watching

Flamborough Head is an internationally important area for breeding birds and a staging post for migrants to rest and re-fuel.

- Keep a good distance from roosting birds especially on the beaches. High tide is a critical rest time for birds.
- Do not disturb breeding birds. Nesting birds are protected by law - some species have special protection and you could be prosecuted for disturbing them.
- Please keep to permissive and public footpaths when bird watching. Many farmers are improving habitats for birds through Countryside Stewardship. Reckless disturbance puts this work in jeopardy.



- Follow the RSPB 'Code of Conduct for Birdwatchers' (see Contact List).
- Take care not to harm the habitats that are home to not only the birds you enjoy watching, but also a variety of plants and other animals.

Recreational Angling

- Take only as much bait as you need, returning unused worms to the beach.
- Follow the National Federation of Sea Anglers (NFSA) 'Conservation Code for Sea Anglers'. www.nfsa.org.uk
- Take all waste home and dispose of it safely including any old hooks, lines and tackle, which can hurt birds and animals.

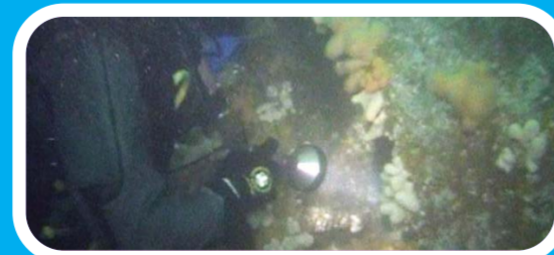
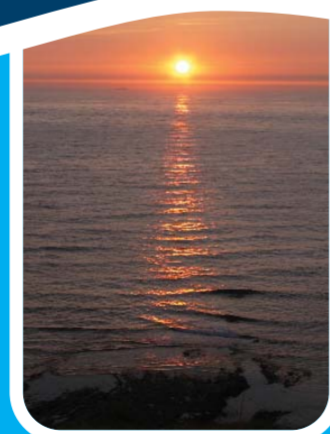


Examples of UK and EU Minimum Landing Sizes (cm):

Bass	36	Plaice	27
Cod	35	Dover Sole	24
Saithe	35	Pollack	30
Whiting	27	Mackerel	30



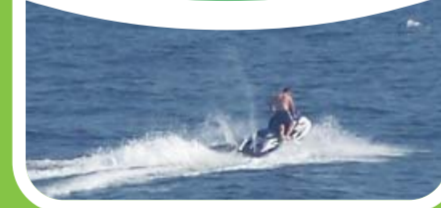
Diving



- Pay attention to your buoyancy and take care not to cause damage to the environment with your feet or fins.
- Be aware that some species are particularly vulnerable to contact or disturbance. If you do pick something up, please handle with care and put it back to where you found it.
- Let animals decide how close they want to be. If you see signs of disturbance (such as sudden movements) then you should cease your approach or move gently away.
- Understand that your trapped exhaust air can kill marine life found within caves and wrecks. Minimise your time in such places.

Leisure Craft

- Please use the designated launching site at Belvedere Boat Launch, Bridlington.
- Vessels may not be launched before 0800hrs and must return to the slipway at least one hour before sunset.
- A Public Safety Zone, for jet skis and boats traveling over 8 knots within 300 metres of the tide edge is in place on all beaches controlled by the East Riding of Yorkshire Council.
- When kayaking or canoeing please respect all wildlife. It is recommended that paddlers explore the marine environment in small groups for both safety and to minimise wildlife disturbance and environmental impacts.



- Please keep away from bird roosting sites, found between High Stacks and Danes Dyke, and away from birds rafting on the sea - particularly between January and August.
- In season (1st April - 31st August), salmon nets are often used near the beaches. Persons in charge of vessels must keep to the seaward side and not go inside the area of the nets.
- Noise from powered crafts can disturb both wildlife and people - be considerate and keep well away.
- In an emergency contact the Coastguard on 999 or VHF channel 16.

Bait Digging and Collection

- Carefully replace stones or seaweed when collecting crabs, to avoid damaging other sheltering animals.
- Observe local byelaws and regulations on the use of the coast.
- Avoid putting feeding or roosting birds to flight, especially towards high tide or at night. The main roosting sites are Danes Dyke beach, South Landing beach and between New Fall Cliff and Truckway Cliff.
- Avoid disturbance to archaeological sites.



- Back-fill any holes made, to make it safe for other users and to maintain intertidal habitats.
- Take re-usable buckets or containers for collecting.
- Only take as much as you need!