

2010/11

Annual Report



**FLAMBOROUGH
HEAD**

MANAGEMENT PLAN

The 2010/11 Annual Report was drafted and compiled by
Project Officer Katherine Gray

CONTENTS

1.	EXECUTIVE SUMMARY	2
	ACKNOWLEDGEMENTS	2
2.	MANAGEMENT PLAN REVIEW	2
2.1	The Flamborough Management Plan Annual Review Process	2
2.2	The Action Plan.....	2
2.3	Revisions to the Management Plan Action Plan	3
2.4	External funding to deliver the Projects section of the Management Plan	3
3.	CONDITION & COMPLIANCE MONITORING.....	3
3.1	Condition monitoring	3
4.	OPERATIONAL ISSUES.....	3
4.1	Byelaw XXVII - Flamborough Head No Take Zone	3
4.2	Byelaw XVIII Fixed Engine (Authorisation) Byelaw.....	4
4.3	Byelaw XXVIII Lobster Conservation Byelaw	4
4.4	Marine and Coastal Access Act 2009.....	4
4.4.1	Marine Management Organisation.....	6
4.4.2	Inshore Fisheries and Conservation Authorities	6
4.5.	Conservation of Habitats and Species Regulations 2010.....	5
4.6	Signage and Interpretation.....	7
4.7	Conservation Objectives.....	6
4.8	Flamborough Relevant Authorities Management Group	6
4.8.1	Management Changes in Membership	6
4.8.2	Management Group Meetings and Programme of Work	8
4.9	Flamborough Head Maritime Forum.....	7
4.10	Flamborough Fisheries Liaison Group.....	8
4.11	Student Placements.....	8
4.12	Appointment of New Staff.....	8
5.	PROMOTION	8
5.1	Media Coverage	8
5.2	Talks	8
5.3	Site Visits	8
5.4	Publications.....	8
6.	FINANCE AND OPERATION	8
6.1	Financial Report	8
6.2	Review of Contributions	8
7.	REFERENCES	9
8.	ANNEX A - Byelaw XXVII Flamborough Head No Take Zone	10
9.	ANNEX B - Relevant Authorities benchmark actions - period 2009/10 & 10/11.....	12
10.	ANNEX C – Relevant Authorities ongoing actions - period 2009/10 & 10/11.....	24
11.	ANNEX D – Action Plan amendments.....	36
12.	ANNEX E – Survey and monitoring of the condition of interest features - 2009-11.	37

1. EXECUTIVE SUMMARY

The Flamborough Head Management Plan has now completed its fourth year of implementation, since the review of the document in 2006. Engagement with those who live, work and use the area for recreation and enjoyment still remains a key element of the plans successful implementation, with Forum meetings held twice a year.

This report will take you through the work of the Management Group and the Project Officer over the past 12 months, detailing a number of new and exciting projects, including the newly designated No Take Zone between Danes Dyke and Sewerby Steps and the Storyboard project, coordinated by the Flamborough Head Assets Group.

These annual reports sit alongside the Management Plan; for those requiring more detailed information on the management of the European Marine Site and surrounding area, please consult the main plan, which runs from 2006-2012, copies can be downloaded at <http://www.flamboroughheadsac.org.uk/downloads/>

ACKNOWLEDGEMENTS

Thank you to all the members of the Flamborough Head Relevant Authorities Management Group, The Flamborough Head Maritime Forum, The Flamborough Head Fisheries Liaison Group and The Flamborough Head Environmental Assets Group for their continued support for the plan and commitment to its ongoing implementation.

2. MANAGEMENT PLAN REVIEW

2.1 The Flamborough Head Management Plan Annual Review Process

The whole document will be reviewed again in 2011/12, with written reports relating to the action plan, submitted to the Management Group on a yearly basis (as stated in Section 5 of the Management Plan), at which point the action plan will be reviewed and its effectiveness assessed, with the possibility of revisions to the contents.

The purpose of producing a brief written report is to record the progress of implementing the agreed actions. For Natural England and the Environment Agency the report will also include an update of research findings and site monitoring.

An email was sent to all those authorities with actions (ongoing and benchmarks) in February, which included the standard reporting forms to be used. These forms were completed by the individual relevant authorities and returned to the Project Officer, in March 2011.

2.2 The Action Plan

The Management Plan action plan, that all relevant authorities are to follow details the action and how this will be achieved, indicating the timescales in which these actions are to be initiated/completed.

Actions in the Plan can either be a benchmark indicated by a ✓ i.e. for which a report should be produced or the time for which the action should be completed by, or an ongoing action indicated by a → in the Management Plan.

The detailed reporting forms, highlighting the work undertaken during 2010/11 by each of the leading authorities for those actions classified as benchmark, can be found in Annex B. All actions that are ongoing are contained in Annex C.

2.3 Revisions to the Management Plan Action Plan

There has been 1 amendment made to the action plan, following the completion of the reporting forms; these can be viewed in Annex D.

2.4 External funding to deliver the Projects section of the Management Plan

The delivery of the Projects section of the Management Plan is coordinated through the Flamborough Head Environmental Assets Group. The group will report to the Flamborough Head Relevant Authorities Management Group, with the Project Officer sitting on both groups.

A bid was put in to the Crown Estate's Marine Communities Fund, for funding for additional No Take Zone interpretation. This bid was unsuccessful as the Crown Estate were already funding a project in this area, at the Flamborough Living Seas Centre.

Opportunities for funding from the Heritage Lottery Fund, the Esmee Fairbairn Foundation and Life+ are currently being looked into for future funding.

3. CONDITION & COMPLIANCE MONITORING

3.1 Condition monitoring

The Flamborough Head Special Area Conservation (SAC) covers a total area of 6,312 hectares. For condition assessment purposes the area is divided into 2 units; intertidal (which is split into a further 25 units) and subtidal, both are assessed on a rolling basis every 6 years.

The SSSI condition assessment of the site begun in 2008 and monitoring of the intertidal rocky shore, vegetated sea cliffs, and the submerged and partially submerged caves is now complete, with the assessment of the kelp due to be completed in 2012/13.

4. OPERATIONAL ISSUES

4.1 Byelaw XXVII - Flamborough Head No Take Zone

North Eastern Sea Fisheries Committee (NESFC) made this Byelaw (see Annex A) on 27th January 2009, with a formal application made to the Fisheries Minister. Confirmation from the Minister was received on 21st July 2010.

The Byelaw applies to the Flamborough Head Special Area of Conservation (SAC) and it prohibits the removal of seafish, including shellfish, by any method from within the defined area. The area runs from Sewerby Steps to Dane's Dyke, extending 700m seaward from the cliff base. This area is only the third NTZ to be formally designated in UK waters and the first to contain intertidal habitat.

The purpose of this No Take Zone is to examine what happens to populations of marine species if we stop removing them from this area, and to help the area return to a more "natural" state. A 5 year monitoring strategy is in place which gives clear guidance on techniques to be used and where control sites should be located, including how the data from

these sites, and the NTZ, will be analysed. The monitoring is carried out by NESFC, with support from Natural England and the local fishing industry.

NESFC have secured £13,000 from the SITA Trust for the “Restoration and enhancement of the Flamborough Head *Mytilus edulis* stock” project. The project aims to increase the local blue mussel (*Mytilus edulis*) spawning stock biomass through the protection and development of a permanent brood stock within the Flamborough Head NTZ. Blue mussel on sediment is identified as a UK BAP priority habitat. For more information please visit <http://www.sitatrust.org.uk/projects/flamborough-head>

4.2 Byelaw XVIII - Fixed Engine (Authorisation) Byelaw

The North Eastern Sea Fisheries Committee’s (NESFC) current fixed netting regulations were revoked and remade (subject to Ministerial approval) by the Committee on 27 April 2010 amending the existing byelaw made under section 37 of the Salmon Act 1986 authorising the placing and use of fixed engines for the purposes of section 6 of the Salmon and Freshwater Fisheries Act 1975. Section 6 of the 1975 Act, which prohibits the placing or use of unauthorised fixed engines, has been repealed on 1 January 2011 by the Marine and Coastal Access Act 2009 necessitating technical change to the existing fixed engine byelaw. The byelaw will allow the continued use of fixed engines within the NESFC District as currently permitted and continue the same restrictions for the protection of salmon and sea trout. It will establish a new restricted permit scheme for the exploitation of sea bass between Flamborough Lighthouse and Withernsea Lighthouse. This scheme will be limited to a maximum of five permits for licensed under 10 metre fishing vessels only.

4.3 Byelaw XXVIII - Lobster Conservation Byelaw

The North Eastern Sea Fisheries Committee’s (NESFC) proposed lobster conservation Byelaw XXVIII will introduce mandatory escape gaps for all pots worked between the River Tyne and Steetly Pier, North of Hartlepool.

The purpose of this Byelaw is to reduce undersize by-catch, damage associated with discards and the illegal retention of juveniles within the Northern Sector of the Committee’s District. This will enhance the spawning stock biomass and reduce discard mortality rates for crustacean species within the area.

Prior to the commencement of formal consultation over fifteen letters of objection were received by the Committee opposing the proposed mandatory introduction of escape gaps. These objections have been considered very carefully and a formal response will be released before the end of 2010 but on balance Committee Officers feel that the need to improve protection for the lobster fishery in the Northern areas of the District far outweighs the potential economic impacts highlighted.

Further information about this and all other byelaws in North Eastern Sea Fisheries district can be found on the Committee’s website (www.neseafish.gov.uk).

4.4 Marine and Coastal Access Act 2009

The Marine & Coastal Access Act received Royal Assent in November 2009. The Act aims to ensure clean healthy, safe, productive and biologically diverse oceans and seas, by putting in place better systems for delivering sustainable development of marine and coastal environment. This will be done by:

- establishing a new Marine Management Organisation (MMO) as the government's principal delivery body in the marine area
- creating a strategic marine planning system that is intended to clarify national and local marine objectives and priorities, and set the context for licensing decisions.
- introducing a new marine licensing system. The new system will enable activities such as fishing, dredging and small off-shore renewable energy projects to be regulated through a single licence subject to a simplified procedure.
- enabling the designation of areas as Marine Conservation Zones (MCZs) where activities can be controlled in order to achieve conservation objectives.
- replacing Sea Fisheries Committees (SFCs) with Inshore Fisheries and Conservation Authorities (IFCAs).
- reforming fisheries management by, amongst other things, introducing a new licensing and authorisation system for fishing, a new authorisation scheme for the movement of live fish, and powers for the Environment Agency to make emergency byelaws.
- enabling better coastal access for the public through the creation of a coastal route round England and Wales with areas for recreation such as beaches, dunes and cliffs.

More information can be found at <http://www.defra.gov.uk/environment/marine/mca/>

4.4.1 Marine Management Organisation

The Government has set up the Marine Management Organisation (MMO) to deliver many of our objectives for the marine area. The organisation is a centre of marine expertise, provides a consistent and unified approach, delivers improved co-ordination of information and data and reduces administrative burdens. The integration will provide benefits from joined up delivery and economies of scale that could not be realised by placing those functions in separate organisations.

4.4.2 Inshore Fisheries and Conservation Authorities

Fisheries and environmental management arrangements are strengthened by the Act so that more effective action can be taken to conserve marine ecosystems and help achieve a sustainable and profitable fisheries sector. As part of modernising inshore fisheries management in England, Sea Fisheries Committees (SFCs) will be replaced by Inshore Fisheries and Conservation Authorities (IFCAs) on April 1st 2011. IFCAs aim to “lead, champion and manage a sustainable marine environment and inshore fisheries, by successfully securing the right balance between social, environmental and economic benefits to ensure healthy seas, sustainable fisheries and a viable industry”. IFCAs will have powers to make emergency byelaws. The Sea Fisheries Committee for this area has now become the North Eastern Inshore Fisheries and Conservation Authority.

4.5 Conservation of Habitats and Species Regulations 2010

On 1 April 2010 The Conservation of Habitats and Species Regulations 2010 will replace The Conservation (Natural Habitats, &c.) Regulations 1994. The Conservation of Habitats and Species Regulations 2010 update the legislation and consolidate all the many amendments which have been made to the Regulations since they were first made in 1994. The new Regulations do not make any substantive changes to existing policies and procedures, other than in relation to the establishment of the Marine Management Organisation (MMO) – which takes on certain licensing functions from Natural England - and to ensure consistent with the approach in the Marine and Coastal Access Act 2009.

Consolidation has involved substantial amendments to the extent of the Regulations (which now apply only to England and Wales apart from in respect of certain reserved matters). Another objective of the consolidation has been to restructure the Habitats Regulations into a more logical structure and order. This is intended to make it easier for people to use and understand the Regulations. Under this restructuring Regulation 33 “Marking of a European Marine Site and advice by nature conservation bodies” becomes Regulation 35, and Regulation 34 “Management scheme for European Marine Site” becomes regulation 36. For the full list of changes please visit <http://www.defra.gov.uk/wildlife-pets/wildlife/protect/bird-habitat/habitat2010.htm>

4.6 Signage and Interpretation

Regulation 35¹ provides for the marking of the site, but does not make this a statutory responsibility of an individual relevant authority. Heritage Lottery funding was secured by The Yorkshire Wildlife Trust on behalf of the Flamborough Head Environmental Assets Group in September 2008, to develop the “Storyboard Project”. This project was for the development of improved interpretation around the Headland which would tell the story of Flamborough Head. This project was completed in June 2010, with 9 Storyboards being installed around the headland. The Storyboards cover the following themes; seabirds, migration, marine wildlife, farming & wildlife, geology & geomorphology, history, archaeology, lighthouse & shipping, and fishing (for more information please visit www.flamboroughheadstoryboard.co.uk).

Signs are currently being constructed to mark the main access points to the No Take Zone from the shore.

4.7 Conservation Objectives

In 2010/11 Natural England undertook surveys of the extent of the sublittoral reef features, the rocky shore intertidal and characteristic biotopes, and the extent of the sea caves (see Natural England’s Condition Reports, Annex E)²

4.8 Flamborough Head Management Group

A number of Relevant Authorities form the Flamborough Head Management Group who are all equal members of the Group, electing a Chair on an annual basis. The current Chair is Mark Tilling, North Eastern Sea Fisheries Committee. This group has no delegated powers, as it is purely a representative body to involve all Relevant Authorities in the ongoing management of the SAC. Each relevant authority has to undertake its powers and duties with respect to the Habitats Directive and will need to act accordingly on an individual basis or in association with other Relevant/ Competent Authorities when multiple consents are required, to ensure its plans and actions are consistent with this Management Plan.

4.8.1 Management Changes in membership

- Leanne Stockdale is now a Marine Conservation Adviser for Natural England.
- Mark Tilling was appointed Deputy Chief Fishery Officer (land based), for the North Eastern Sea Fisheries Committee.

¹ Conservation of Habitats and Species Regulations 2010.

² Copies of the full reports are available on request.

- Phil Young was appointed Team Leader – Technical (Fisheries, Recreation and Biodiversity) at the Environment Agency.
- Karrie Dent is now the Coastal Projects Manager for Yorkshire Water.
- Kate Masser is the new Coastal Officer for Scarborough Borough Council.

4.8.2 Management Group Meetings and Programme of Work.³

In 2010/11 meetings were held in April and October 2010.

22 April 2010 – Bridlington Harbour Commissioners– 8 attendees

Business Included:

- An update on Management Plan Implementation
- Flamborough Head No Take Zone update
- Net Gain Marine Conservation Zones project update
- Project Officer work plan and performance
- Forum and Liaison group update

21 October 2010 – Bridlington Harbour Commissioners - 10 attendees

Business Included:

- An update on Management Plan Implementation
- Flamborough Head No Take Zone update
- EMS condition monitoring report
- Update on the Sea Fisheries Committee transition into Inshore Fisheries and Conservation Authority.
- Forum and Liaison Group update

4.9 Flamborough Head Maritime Forum

One meeting was held in February 2011.

22 February 2011 – Flamborough WI Hall - 17 attendees

Topics covered:

- The implementation of the Flamborough Head Management Plan
- An update on current projects taking place on the Headland, including the Storyboard project and the No Take Zone
- A presentation on the SAC Condition Monitoring by Leanne Stockdale, Marine Conservation Adviser, Natural England
- A presentation on the SPA Seabird Monitoring by Ian Kendall, RSPB Bempton Site Manager
- A presentation entitled Yorkshire's Living Seas by Kat Sanders, Marine Awareness & Research Officer, Yorkshire Wildlife Trust

³ Minutes are available on request.

4.10 Flamborough Fisheries Liaison Group

One Fisheries Liaison Group meeting has been held this financial year, on the 3 August 2010. The purpose of this meeting was to give an update of the situation of the No Take Zone (NTZ), as the byelaw was approved in July 2010, and also to answer any questions about it. An update letter was sent to the group in July 2010, to inform them on the progress made on the NTZ.

4.11 Student Placements

Throughout July and August 2010 two students from York University completed their Master's projects within the Flamborough Head European Marine Site; Thomas Hill completed habitat mapping of the No Take Zone, and Helen Craven undertook a study of people's awareness and understanding of the site's designation.⁴

4.12 Appointment of new staff

In June 2009 Leanne Stockdale left her position as Project Officer to start a new role at Natural England. In April 2010 she was replaced by Katherine Gray, who received an 18 month contract (until October 2011).

5. PROMOTION

5.1 Media Coverage

- Drifffield Show – 21st July 2010
- No Take Zone - September 2010
- ERYC Apple Festival – 3rd October 2010

5.2 Talks

- Sustainable Natural Environment Task Group – Managing Flamborough Head
- Wakefield Girls High School – Flamborough Head's Habitats and Management
- Yorkshire Wildlife Trust & LEADER's Nature Tourism Conference.

5.3 Site Visits

- Natural England Marine Team
- The Wildlife Trusts' Chief Executives
- Wakefield Girls High School

5.4 Publications

- Quarterly newsletter – sent out in September, December, March and June
- Launch of the Flamborough Head SAC website (www.flamboroughheadsac.org.uk). This website provides a hub of information on the headland's natural environment, conservation designations and cultural heritage. It also provides information on the Flamborough Head Storyboards, including walking trails and podcasts to download.

6. FINANCE AND OPERATION

6.1 Financial Report

⁴ Copies of the reports are available on request.

Invoices for contributions totalling £26,000.00 were issued to individual Relevant Authorities in 2010. All contributions were received by the end of the 2010/11 financial year.

6.2 Review of Contributions

There are currently 11 Relevant Authorities for the Flamborough Head SAC. In 2010/11 4 of them contributed financially to the Plan. In addition, the RSPB contributed to the Officers role forming stronger links with the NGO's. It is essential that funding from the Relevant Authorities be secured, to ensure the continuation of the Plans implementation.

A Memorandum of Agreement (MOA) was signed in 2008 by all contributing relevant authorities including East Riding of Yorkshire Council, Natural England, North Eastern Sea Fisheries Committee, North Yorkshire County Council and Scarborough Borough Council. This is a 3 year MOA, securing the Officers post until March 2011.

7. REFERENCES

- English Nature, 2003. Advice given under Regulation 33(2) of the Conservation (Natural Habitats & c.) Regulations 1004. English Nature.
- Statutory Instruments, 1994 No.2716. The Conservation (Natural Habitats, &c.) Regulations 1994. London: HMSO October 1994
- Statutory Instruments, 2010 No. 490. The Conservation of Habitats and Species Regulations 2010.
- Marine and Coastal Access Act 2009.

8. ANNEX A - Byelaw XXVII. Flamborough Head No Take Zone

The Committee for the North Eastern Sea Fisheries District, in exercise of its powers under section 5 of the Sea Fisheries Regulation Act 1966 has made the following Byelaw:

XXVII. Flamborough Head No Take Zone

This byelaw applies to that part of the district within an area known as the Flamborough Head Special Area of Conservation and bounded as follows: -

1. Between a line drawn due South from point A ($54^{\circ} 06'00''N$ $000^{\circ} 09'85''W$), to a line drawn due South from point L ($54^{\circ} 06'21''N$ $000^{\circ} 08'62''W$). The seaward limit of the area stretches 700m from the following points: -

A	$54^{\circ} 06'00''N$	$000^{\circ} 09'85''W$
B	$54^{\circ} 06'02''N$	$000^{\circ} 09'76''W$
C	$54^{\circ} 06'03''N$	$000^{\circ} 09'66''W$
D	$54^{\circ} 06'03''N$	$000^{\circ} 09'54''W$
E	$54^{\circ} 06'05''N$	$000^{\circ} 09'45''W$
F	$54^{\circ} 06'06''N$	$000^{\circ} 09'32''W$
G	$54^{\circ} 06'08''N$	$000^{\circ} 09'22''W$
H	$54^{\circ} 06'11''N$	$000^{\circ} 09'10''W$
I	$54^{\circ} 06'14''N$	$000^{\circ} 08'95''W$
J	$54^{\circ} 06'15''N$	$000^{\circ} 08'82''W$
K	$54^{\circ} 06'18''N$	$000^{\circ} 08'72''W$
L	$54^{\circ} 06'21''N$	$000^{\circ} 08'62''W$

This area shall be known as the Flamborough Head No Take Zone.

2. Subject to the provisions of this Byelaw, for marine environmental purposes no person shall remove any sea fish, marine fauna or flora from within the area defined in paragraph 1.
3. This Byelaw will be reviewed and considered by North Eastern Sea Fisheries Committee at its October meeting on a five-yearly basis, following the date of the Byelaw coming into force. As part of the review North Eastern Sea Fisheries Committee will consider whether the provisions remain relevant and if any Byelaw revisions are necessary.

Interpretation

All positions relative to this Byelaw are satellite derived from WGS84 Datum.

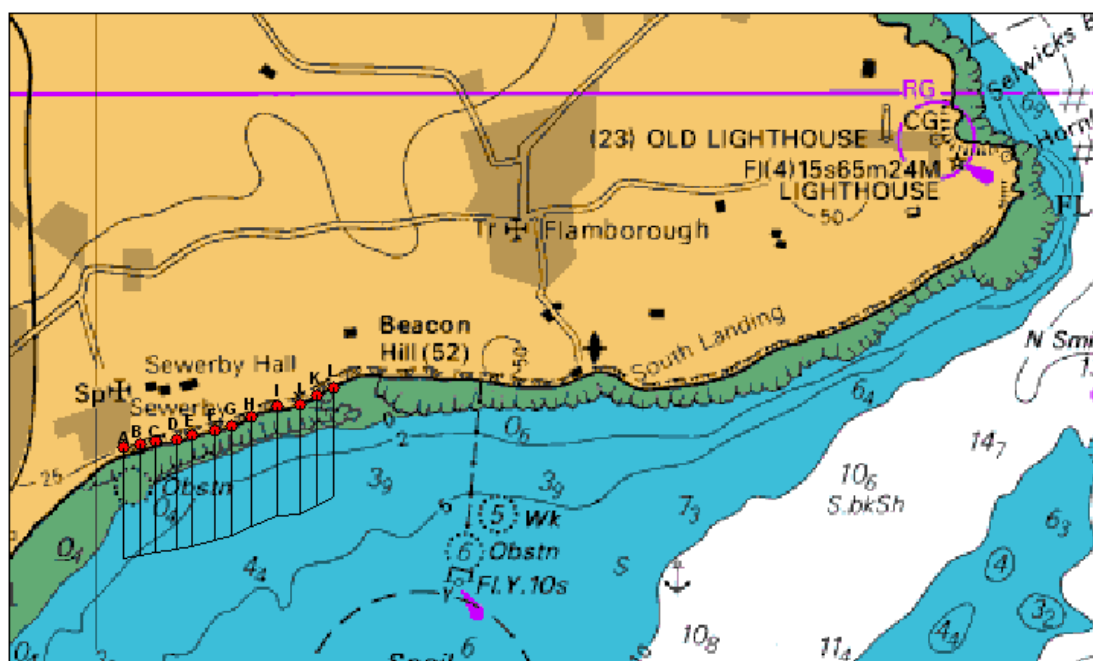
‘Sea fish’ means fish of any description found in the sea including shellfish.

‘Marine Fauna and Flora’ means any animals or plants that habitually live in the sea

Explanatory Note

The purpose of this Byelaw is to pilot the impact of No Take Zones on fisheries management and marine environmental conservation within the North Eastern Sea Fisheries Committees district. The Byelaw will totally prohibit the removal of sea fish and other marine fauna and flora within the area specified in paragraph 1 of the Byelaw (detailed on the associated chart).

The regulation will protect the interest features of the Flamborough Head SAC and ensure that the Committee is meeting its statutory duties in accordance with the ‘Conservation (Natural Habitats,&c.)’ Regulations 1984.



Key

- Points A - L

9. ANNEX B – Relevant Authorities benchmark actions for the financial period 2009/10 & 2010/11

Report from Bridlington Harbour Commissioners

SHIPPING, NAVIGATION AND DEPOSITS AND AT SEA

2009/10 2010/11

This report covers local vessels, safe navigation, BHC systems of work and dredging matters for the Flamborough Head Management Plan.

There has not been any changes to the number or types of vessels passing through the S.A.C. Vessels of the Trinity House Lighthouse Service continue to maintain the buoys marking the north and south ends of the Smithic Sands and the R.A.F. regularly exercise in the bay with their vessel from Yarmouth and helicopter from Leconfield. Jet skis can regularly be seen travelling at speed close to the beaches at Bridlington and whilst recognised by the Royal Yachting Association are not allowed within the jurisdiction of Bridlington Harbour. The Royal Yorkshire Yacht Club anchor several marker buoys around the bay each spring to allow racing to take place and then remove them each back end. One of these buoys will be quite close to, but not inside the newly established No Take Zone between Sewerby Steps and Danes Dyke.

The current Bridlington Harbour 'Port Waste Management Plan' was approved by the Maritime and Coastguard Agency on 1st June 2009. A further inspection and approval took place on 7th February this year 2011. This plan covers and explains the number, type and size of waste reception facilities around the harbour, the method of collection, removal and various contractors for different wastes. The plan was written and produced after consultation with the Harbour Commissioners' stakeholders and the cost for removal of all waste is included in Harbour Dues.

The Bridlington Harbour 'Oil Pollution Contingency Plan' has been updated and was approved by the Maritime Coastguard Agency dated 13th September 2010 and covers risk assessments, environmental sensitivities, responsibilities, counter pollution resources and contact details in case of emergency.

The Harbour Master and Harbour Engineer are both qualified at Level 4 (On Scene Commander) to control any emergency oil spill clean-up. Also another member of staff is qualified at Level 1. These 3 members of staff do annual exercises, taking part with staff from other ports from Bridlington to Berwick. These exercises consist of classroom, desktop and deployment of equipment.

The Bridlington harbour licence for maintenance dredging was issued for 3 years commencing on 19th January 2009 and allows for the removal of 20,000 tons of spoil per year. The Harbour Commissioners have encountered many problems and breakdowns with their dredger 'Gypsy Race' since the previous report of 2008/2009 and has not been able to remove the desired amount of spoil. A decision was taken in June 2010 to scrap the dredger and she left Bridlington for New Holland at the end of that month. Scarborough Borough Councils dredger 'Sandsend' is now contracted to carry out the dredging for the foreseeable future.

The following monthly tonnage figures of removed spoil will confirm the problems stated above:-

2009	January	NIL	2010	January	480
	February	480		February	1120
	March	NIL		March	NIL
	April	NIL		April	NIL
	May	NIL		May	6121
	June	1600		June	12279
	July	1280			
	August	NIL			
	September	NIL			
	October	NIL			
	November	NIL			
	December	NIL			

The last 2 months tonnage removed by the dredger 'Sandsend'.

The 3 year dredging licence for a total of 60,000 tons only allows 20,000 tons to be removed annually and not to go over that figure.

As so little spoil was removed in 2009 there is now an excessive amount of spoil in the harbour and an application to the Marine Management Organisation for an extra 10,000 tons was applied for in June 2010 and after consultation with Natural England and various other bodies, this extra tonnage was granted in December 2010 as a one off for the final year of the present licence.

The times of disposal at the spoil ground remain the same to ensure the removal of the silt from the bay and periodic inspections of the beach as far as South Landing are carried out by the Harbour Master to prove the cleanliness of the shore.

C. J. Wright

Harbour Master & Chief Executive.

FISHING AND AQUACULTURE REPORT 2009/10 2010/11

This report covers local fishing activities in and around Flamborough Head.

The number of angling vessels operating from Bridlington harbour during the past two years has remained the same. These ten vessels are mostly licensed to carry 12 anglers only and the majority of the skippers now struggle to make a decent living. This sport does not appear to be as popular as years ago particularly as there is no the amount of fish to be caught in the North Seas as in the past.

Two fishing cobsles still operate carrying anglers from the North Landing at Flamborough during the summer months and also take passengers on seabird watching trips and interesting trips to the caves.

The skippers of the angling vessels are aware of the No Take Zone between Sewerby steps and the Bridlington side of Danes Dyke, which came into being during July 2011. There will be much interest in the years to come of the possible changes occurring at the site.

Much of the angling is carried out within the S.A.C. and since the Fishing and Aquaculture Report of 2008/09, there has been little changes in the results. The only species to have been caught in abundance and during the summer months have been small Whiting. Codling have been scarce but the Mackerel have shown up seasonally in as many numbers as years ago. There was a period of two weeks in August 2010 when Mackerel were being caught in quantity from the South Pier. Whilst Sea Bass continue to be caught on rod and line, their numbers have not increased since the previous report. There are now restrictions for commercial fishermen with bass nets in this area. Five licences being issued to fish between high and low water and five licences to fish behind low water. Many flat fish, i.e. Dabs and Flounders are caught in the bay during the summer months and interestingly, as reported by the angling vessel skippers, many of these species are caught in and around the area of spoil ground used for the deposits from Bridlington harbour. Angling activities during the last two winters have been very quiet as this has always been a bad time to catch any species of fish on a rod and line and perhaps this is due to the turbidity in the water. On a similar note, there have been suggestions from the local fishermen that salt removal from the caverns at Aldbrough does not help and in fact impedes migratory fish in the bay.

The past two seasons have been poor for the salmon fishermen and since 2006 the velvet crabs have not returned to the bay in the numbers to make them worth fishing for commercially.

When time allows and on spring tides the Harbour Master inspects and photographs the beach between South Landing and the Coastguard building at the start of Sewerby Cliffs. This enables him to report on the cleanliness of the beach because of dredging operations. It has been interesting to note that during the last 12 months mussels are again starting to grow on the rocks in the area of Sewerby Steps. These mussels had, in the past, been decimated by collection for use by angling vessel owners. As bait is not now provided on the angling vessels, the mussels will now most likely grow in abundance.

C. J. Wright

Harbour Master & Chief Executive

Flamborough Head Management Plan Annual Reporting Form

Relevant Authority: **East Riding of Yorkshire Council**

Additional Input: - **The Maritime Coastguard Agency may be able to offer additional input**

Financial Year: **2009/2010**

Management Rationale: **Energy industries**

Currently offshore.

Action: Emergency Contingency Plan in event of pollution incident. Planning team to report annually of any incidents effecting the marine site and activities undertaken.

Please provide information regarding the target/measures set for the financial year 2009/2010 and the progress made, highlighting any additional actions required or amendments.

The Council's Emergency Planning Team record major pollution incidents. There have been no major pollution incidents recorded during 2009/2010 which are considered to have effected the marine site. The Maritime Coastguard Agency may be able to provide additional information on less significant pollution incidents.

It is recommended that in the future this management action is recorded as an ongoing action rather than a benchmark.

Flamborough Head Management Plan Annual Reporting Form

Relevant Authority: East Riding of Yorkshire Council

Additional Input: - Local Police, Forum, YWT...

Financial Year: 2010/2011

Management Rationale: Land management

Work with landowners/managers to safeguard adjacent internationally important coastal habitats and monitor effects of activities in order to determine they are consistent with conservation objectives for vegetated sea cliffs.

Action: Obtain baseline information on extent of and monitor trends for quad biking around the Headland.

Please provide information regarding the target/measures set for the financial year 2010/2011 and the progress made, highlighting any additional actions required or amendments.

While the Council may receive limited anecdotal reports of unauthorised quad bike use on sites it manages (including Danes Dyke) and public rights of way, this does not constitute a formal monitoring system and covers only a small portion of the Headland. Therefore there has been no specific progress during 2010/11.

In 2007/08 initial work was being carried out to provide a mechanism for recording incidences of unauthorised quad biking around the Headland to provide baseline information in partnership with other agencies.

Initial contact was made by the Flamborough Project Officer with the local Police, who it was felt were in a better position to provide more complete information. At that stage they expressed their willingness to be involved and confirmed that they would be able to supply statistics on reported cases of unauthorised motor vehicle use.

Following a period of the project officer post being vacant and the subsequent appointment of a new project officer there is now a need to review the scope and responsibility for this management action. As previously identified the problem is not restricted to quad bikes and any monitoring should be broadened to include the use of dirt bikes and unauthorised cars. It is also important that full advantage is taken of all sources of information and that the various land owners, managers and residents around the headland are engaged to provide the detail required to establish a robust baseline.

Please refer to Section 5 of the Management Plan for further information.

Flamborough Head Management Plan Annual Reporting Form

Relevant Authority: East Riding of Yorkshire Council

Additional Input: -

Financial Year: 2010/2011

Management Rationale: Land management

Work with landowners/managers to safeguard adjacent internationally important coastal habitats and monitor effects of activities in order to determine they are consistent with conservation objectives for vegetated sea cliffs.

Action: Joint working with partners to protect and enhance Biodiversity Action Plan habitats at Flamborough Head.

Please provide information regarding the target/measures set for the financial year 2010/2011 and the progress made, highlighting any additional actions required or amendments.

Please refer to Section 5 of the Management Plan for further information.

The project officer for the Flamborough Management Scheme regularly attends the East Riding Sustainable Natural Environment Task Group (SNETG) meeting to provide any updates relevant to the group. The September 2010 SNETG meeting was coastal focused and the project officer gave a presentation on the work around the Flamborough Head Management Scheme.

The project officer has worked with the biodiversity officers at ERYC to produce a draft Maritime Cliff and Slopes Habitat Action Plan for the East Riding. The next stage of this process is to form a small consultation group to set and agree targets for the HAP.

The Flamborough Head Management Plan is part of the East Riding of Yorkshire Biodiversity Partnership and attended the Partnership stand at the Drifffield Show last July and the Partnership meeting in January 2011.

The Yorkshire & Humber Biodiversity Forum has developed biodiversity landscape-scale project areas to prioritise and focus the delivery of biodiversity action. One of these areas is the North Yorkshire Coast and Flamborough Head. A meeting led by North Yorkshire County Council was held in Scarborough in early March 2011 to identify existing action in the area.

Support and council endorsement has been given to external funding bids for two projects on Flamborough Head; the Yorkshire Wildlife Trust's South Landing Community Orchard and the Flamborough Bird Observatory's project for BAP grazing marsh at North Cliff Marsh.

Flamborough Head Management Plan Annual Reporting Form

Relevant Authority: East Riding of Yorkshire Council

Additional Input: - Required from Forum, YWT

Financial Year: 2010/2011

Management Rationale: Shipping, navigation and deposits at sea

Identify monitoring programmes to assess any potential impacts on interest features as part of ongoing activity.

Action: Obtain baseline information on extent of and monitor trends for maritime litter affecting site.

Please provide information regarding the target/measures set for the financial year 2010/2011 and the progress made, highlighting any additional actions required or amendments.

The Council's Countryside Access team have continued to conduct beach cleans with the public as part of their countryside events programme during 2010/2011. A key target continues to be to ensure that the information collected by all partners from beaches around the Headland are submitted to the Marine Conservation Society to inform their annual reporting to help monitor trends for maritime litter affecting the site.

Unfortunately the Flamborough Community Environmental Action Group, who coordinated a number of beach cleans around the Headland was wound up during 2010/11. This further increases the need to coordinate the remaining beach clean / reporting activities around the Headland.

Where bathing beaches are Managed by the Council they are routinely cleaned, however at this time only the tonnage of material collected is recorded.

Please refer to Section 5 of the Management Plan for further information.

Flamborough Head Management Plan Annual Reporting Form

Relevant Authority: **East Riding of Yorkshire Council**

Additional Input: -

Financial Year: **2009/2010**

Management Rationale: **Shipping, navigation and deposits at sea**

Identify monitoring programmes to assess any potential impacts on interest features as part of ongoing activity.

Action: Emergency Contingency Plan in event of pollution incident.

Please provide information regarding the target/measures set for the financial year 2009/2010 and the progress made, highlighting any additional actions required or amendments.

The Emergency Planning team is aware of the Management Plan and has used it in the production of the Oil Pollution Plan which is a cross organisation emergency contingency plan. The oil Pollution Plan is in place and is reviewed on a regular basis.

The Emergency Planning team are informed of changes to the Management Plan where required to help inform annual reviews.

Please refer to Section 5 of the Management Plan for further information.

Flamborough Head Management Plan Annual Reporting Form

Relevant Authority: **Natural England**

Additional Input: -

Financial Year: **2009/2010**

Management Rationale: **Land management**

Work with landowners/managers to safeguard adjacent internationally important coastal habitats and monitor effects of activities in order to determine if they are consistent with conservation objectives for vegetated sea cliffs.

Action: Produce a comprehensive site condition assessment of the terrestrial environment, to assess the impact of access on the Headland in line with conservation objectives.

Please provide information regarding the target/measures set for the financial year 2009/2010 and the progress made, highlighting any additional actions required or amendments.

Please refer to Section 5 of the Management Plan for further information.

No report was completed throughout 2009/10. Within 2010/11 condition monitoring of the Maritime Cliffs and Slopes, Intertidal Reefs, Sea Caves and SPA was completed.

Within these reports the effects of visitor pressure was detailed. There were no significant effects, when sites were compared.

A separate report has not been written.

Flamborough Head Management Plan Annual Reporting Form

Relevant Authority: **Natural England**

Additional Input: -

Financial Year: **2009/2010**

Management Rationale: **Recreation and tourism**

Quantify the current levels of site usage and assess against conservation objectives. Raise awareness of potential impacts, consistent with SMA and Heritage coast objectives.

Action: Assess extent of water-based activities affecting site against reef conservation objectives and Reg 33 advice.

Please provide information regarding the target/measures set for the financial year 2009/2010 and the progress made, highlighting any additional actions required or amendments.

Please refer to Section 5 of the Management Plan for further information.

Baseline information on extent of water-based activities affecting the site has not been completed by the LA's; this action has therefore not been completed.

Flamborough Head Management Plan Annual Reporting Form

Relevant Authority: **Natural England**

Additional Input: -

Financial Year: **2009/2010**

Management Rationale: **Recreation and tourism**

Quantify the current levels of site usage and assess against conservation objectives. Raise awareness of potential impacts, consistent with SMA and Heritage coast objectives.

Action: Assess extent of land-based activities affecting site against site conservation objectives and Reg 33 advice.

Please provide information regarding the target/measures set for the financial year 2009/2010 and the progress made, highlighting any additional actions required or amendments.

Please refer to Section 5 of the Management Plan for further information.

Baseline information on extent of land-based activities affecting the site has not been completed by the LA's; this action has therefore not been completed.

Flamborough Head Management Plan Annual Reporting Form

Relevant Authority: North Eastern Sea Fisheries Committee

Additional Input: Natural England

Financial Year: 2009/2010

Management Rationale: Fishing and aquaculture

Use existing baseline information, where available, to develop an ongoing monitoring programme in order to identify any impact on reef interest features within the site.

Action: Assess the potential impact of demersal trawling.

Please provide information regarding the target/measures set for the financial year 2009/2010 and the progress made, highlighting any additional actions required or amendments.

Please refer to Section 5 of the Management Plan for further information.

This action has not been undertaken and needs revisiting in collaboration with NE and the FHPO.

10. ANNEX C – Relevant Authorities ongoing actions for the financial period 2009/10 & 2010/11

Environment Agency ongoing actions – 09/10 & 10/11

Management Rationale	Management Solution	Progress during 2009/10 & 2010/11	Future Timetable	Review of Management Action/Timescale etc.
<p>Industrial activity and consented discharges As a competent authority the EA will comply with the EU Birds & Habitats Directives in planning and carrying out all of its regulatory and operational activities.</p>	Review of existing consents as under the Habitats Regs.	Ongoing	The Agency will continue to comply with the Habitats Regulations	Review March 2012
<p>Industrial activity and consented discharges</p>	Application of the Habitats Regs to plans and projects requiring Agency authorisation.	Ongoing	All applications for new discharge consents will be assessed under the Habitats Regulations	Review March 2012
<p>Land management Work with landowners/managers to safeguard adjacent internationally important coastal habitats and monitor effects of activities in order to determine they are consistent with conservation objectives for vegetated sea cliffs.</p>	Implement the Corporate Strategy for Yorkshire and Humberside 2006-2011 to minimise effects of diffuse sources of pollution from agricultural practices.	Ongoing	Ongoing	Review March 2012
<p>Water Quality</p>	Management measures currently applied: Assess water quality in compliance with the Bathing Waters Directive.	Ongoing	Ongoing	Review March 2012
<p>Water Quality</p>	Obtain baseline information on the level of nutrient enrichment.	No progress to date	This work is now longer done by Yorkshire Area: in future it is going to be undertaken by the National Marine Service	Review March 2012

East Riding of Yorkshire Council – 09/10 & 10/11

Management Rationale	Management Solution	Progress during 2009/10 & 2010/11	Future Timetable	Review of Management Action/Timescale etc.
Energy industries - Currently offshore.	Ensure the Emergency planning team are aware of the Flamborough Head management plan and understand the implications of it in relation to their work	A copy of the Management Plan has been retained by the emergency planning team to inform future planning where appropriate. The Management Plan has been used to inform the production of the cross organisation Oil Pollution Plan.	Ensure that the emergency planning team are informed of any relevant amendments or reviews. In light of current marine planning initiatives, the Management Plan should establish a timetable to further engage with planning and emergency planning teams.	
Energy industries - Currently offshore.	Emergency Contingency Plan in event of pollution incident. Planning team to report annually of any incidents effecting the marine Site and activities undertaken.	No major events have occurred during 2009/10 & 2010/11.	Continue to implement the current management solution.	
Land management Work with landowners/ managers to safeguard adjacent internationally important coastal habitats and monitor effects of activities in order to determine they are consistent with conservation objectives for vegetated sea cliffs.	Obtain baseline information on extent of and monitor trends for quad biking around the Headland.	See 2010/11 Annual Reporting Form.	See 2010/11 Annual Reporting Form.	

Management Rationale	Management Solution	Progress during 2009/10 & 2010/11	Future Timetable	Review of Management Action/Timescale etc.
<p>Land management</p>	<p>Joint working with partners to protect and enhance Biodiversity Action Plan habitats at Flamborough Head</p>	<p>Flamborough Head Project Officer attends SNETG. Draft Maritime Cliff & Slopes HAP produced. YHBF Biodiversity Landscape-scale Project Area: North Yorkshire Coast & Flamborough Head being progressed.</p>	<p>SNETG meetings ongoing. Targetted consultation on HAP</p>	
<p>Planning and development As competent authorities the LPAs will comply with the EU Birds & Habitats Directives in planning and carrying out all of their regulatory and operational activities.</p>	<p>Application of the Habitats Regs to plans and projects requiring consent.</p>	<p>None</p>	<p>Ongoing</p>	
<p>Planning and development</p>	<p>Use management plan to inform ERYC Local Development Framework.</p>	<p>The Marine Site and its Management Plan have been considered during the development of the ERYC LDF.</p>	<p>The management Plan should continue to form part of the evidence base for the emerging LDF.</p>	
<p>Recreation and tourism Quantify the current levels of site usage and assess against conservation objectives. Raise awareness of potential impacts, consistent with SMA and Heritage coast objectives.</p>	<p>Obtain baseline information on extent of and monitor trends for water-based activities affecting site.</p>	<p>None</p>	<p>Agree an approach for obtaining the relevant baseline data with other relevant authorities and partner organisations. It may be appropriate for this to form part of a wider site usage study to help establish the impact of various activities.</p>	
<p>Recreation and tourism</p>	<p>Obtain baseline information on extent of and monitor trends for land-based activities affecting site.</p>	<p>None. However, any approach should also consider the impact of unauthorised land-based activities (see Annual Reporting Form AP2)</p>	<p>Agree an approach for obtaining the relevant baseline data with other relevant authorities and partner organisations. It may be appropriate for this to form part of a wider site usage study to help establish the impact of various activities.</p>	

Management Rationale	Management Solution	Progress during 2009/10 & 2010/11	Future Timetable	Review of Management Action/Timescale etc.
<p>Shipping, navigation and deposits at sea Identify monitoring programmes to assess any potential impacts on interest features as part of ongoing activity.</p>	<p>Obtain baseline information on extent of and monitor trends for maritime litter affecting site.</p>	<p>See AP4</p>	<p>See AP4</p>	
<p>Shipping, navigation and deposits at sea</p>	<p>Emergency Contingency Plan in event of pollution incident.</p>	<p>An Oil Pollution Plan (Emergency Contingency Plan) is in place and is reviewed regularly.</p>	<p>Ensure the Emergency Contingency Planning team are aware of any amendments to the Management Plan.</p>	
<p>Shoreline management Integration of adjacent SMP policies and review against conservation objectives/ Habitats Regulations.</p>	<p>HECAG SMP review of management objectives</p>	<p>During 09/10 and 10/11 progressed through stages 3 to 5, resulting in the development of the finalised Plan. In 10/11 the Plan was approved and adopted by the projects partner authorities including ERYC.</p>	<p>The final dissemination stage of the project will be completed in 11/12, once the Plan has received final sign-off from the Environment agency.</p>	
<p>Shoreline management</p>	<p>Apply Habitats Regs to plans and projects within or adjacent to the site</p>	<p>The requirements of the Habitats Regs have been considered throughout the development of the SMP. This process has been formalised in the production of Appendix ?? of the SMP Habitat Regulations Assessment which was finalised in 10/11.</p>	<p>Ensure the Habitats Regs are applied throughout the delivery of the SMP and its action plan.</p>	

Natural England – 09/10 & 10/11

Management Rationale	Management Solution	Progress during 2009/10 & 2010/11	Future Timetable	Review of Management Action/Timescale etc.
<p>Collection Quantify the current levels of site usage and raise awareness of potential impacts</p>	<p>Assess trends for bait collection from rocky shores against reef conservation objectives and Reg33 advice.</p>	<p>Baseline information on extent of bait collection from rocky shores to my knowledge has not been completed by NESFC. Therefore, assessing the trends and the affect on the SAC has not been completed</p>	<p>Agree a timeline with NESFC for the completion of this survey.</p>	
<p>Collection</p>	<p>Obtain baseline information on extent of and monitor trends for fossil collection from maritime chalk habitat. Assess above against reef conservation objectives and Reg33 advice.</p>	<p>Fishing Liaison Group established and meetings are held every 6 months and as and when needed.</p>		
<p>Fishing and aquaculture Use existing baseline information, where available, to develop an ongoing monitoring programme in order to identify any impact on reef interest features within the site.</p>	<p>Establish fisheries liaison group to discuss fisheries issues at Flamborough Head</p>	<p>Fishing Liaison Group established and meetings are held every 6 months and as and when needed. Natural England attends and inputs into these meetings.</p>	<p>Continue holding meetings, coordinated by the Flamborough Project Officer, every 6 months.</p>	
<p>Land management Work with landowners/ managers to safeguard adjacent internationally important coastal habitats and monitor effects of activities in order to determine they are consistent with conservation objectives for vegetated sea cliffs.</p>	<p>Use land management agreements and site condition assessments to meet statutory targets.</p>	<p>Completed a reporting form for this.</p>		
<p>Land management</p>	<p>Use land management agreements and monitoring to meet non-statutory targets e.g. CSS and ESS and maritime cliff & slope priority BAP habitat.</p>	<p>Completed a reporting form for this.</p>		

Management Rationale	Management Solution	Progress during 2009/10 & 2010/11	Future Timetable	Review of Management Action/Timescale etc.
Land management	Establish land management liaison group to assess feasibility of progressing integrated approach to the use of Agri-environment Schemes at Flamborough Head	A separate Land Management Liaison group is no longer needed. Natural England works with Wolds Ecology to arrange meetings as and when needed for those in agreements or for land owners interested in entering into a scheme.	Continue attending and hosting joint meetings.	Update to say a separate group is no longer needed.
Land management	Assess trends for quad biking around the headland against conservation objectives and Habitats Regs.	Reports of quad biking around the Headland where received during 2010/11.	NE needs to work closely with ERYC on future management of this activity during 2011/12.	
Water Quality	EA and NE - Obtain baseline information on the level of nutrient enrichment.	No update.		

North Eastern Sea Fisheries Committee – 09/10 & 10/11

Management Rationale	Management Solution	Progress during 2009/10 & 2010/11	Future Timetable	Review of Management Action/Timescale etc.
<p>Collection Quantify the current levels of site usage and raise awareness of potential impacts.</p>	Obtain baseline information on extent of and monitor trends for bait collection from rocky shores.	Officer based routine enforcement action and inspections provided an overview of relative intensity of related activity. Action was timed to coincide with peak collection times.	Carry out routine inspection and continue to attend relevant FH project meetings to assist in the dissemination of information and gathering of grass roots feedback. Seek an appropriate method of reliable quantification of the activity in conjunction with the FHPO	This action is ongoing.
<p>Fishing and aquaculture Use existing baseline information, where available, to develop an ongoing monitoring programme in order to identify any impact on reef interest features within the site.</p>	Continue to monitor changes in fishing type, e.g. potting, trawling, and intensity in site based on Report II (Senior, R. 1999), through patrol vessel sighting records and use the developed GIS based monitoring tool to identify the location of potential impacts on reef interest features.	Fishing effort sightings data continues to be collected and analysed. The processing of Defra U10m shellfish returns is also providing a relative baseline/trend of effort and exploitation by ICES sub-rectangle.	Continue monitoring.	This action ongoing.
<p>Fishing and aquaculture</p>	Monitor and record surface markers, and overlay with the above and digital habitat information.	This task has not been fully undertaken. This would be a replication of the effort information as described above and would inherently have a lower confidence level due to uncontrolled variables.	Recommend that this solution is revisited to allow for its removal.	This measure needs to be re-addressed prior to the publication of the next management plan.
<p>Fishing and aquaculture</p>	Investigate viability of environmentally sensitive and sustainable fishing methods	NESFC's temporary Project Officer has been investigating potential avenues and advocates their use through local fisheries action groups. Due to the current EU/UK management diversification opportunities continue to be limited.	Continue to identify innovative opportunities, predominantly through the ER FLAG.	This action is ongoing.

Management Rationale	Management Solution	Progress during 2009/10 & 2010/11	Future Timetable	Review of Management Action/Timescale etc.
Fishing and aquaculture	Apply Habitats Regs to all licensed Fisheries.	This measure is captured within the broader fisheries management regime of the NESFC.	NESFC/NEIFCA must keep abreast of the relevant legislation and continue to monitor activities that may affect the features of the site.	This action is ongoing.
Fishing and aquaculture	Establish fisheries liaison group to discuss fisheries issues at Flamborough Head	A group was established by the FHPO within which NESFC officers actively participate.	As an important forum NESFC/NEIFCA officers will continue their involvement in the group.	This action needs to be amended to reflect the current successful status of the group.

North Yorkshire County Council ongoing actions – 09/10 & 10/11

Management Rationale	Management Solution	Progress during 2009/10 & 2010/11	Future Timetable	Review of Management Action/Timescale etc.
Energy industries Currently offshore.	Ensure the Emergency planning team are aware of the Flamborough Head management plan and understand the implications of it in relation to their work.	None.	NYCC Countryside Service officer to ensure NYCC emergency planning team are aware of sensitivities of site. Lead is thought to be SBC for marine emergencies so no actions envisaged.	Review at end of plan period.
Planning and development As competent authorities the LPAs will comply with the EU Birds & Habitats Directives in planning and carrying out all of their regulatory and operational activities.	Application of the Habitats Regs to plans and projects requiring consent.	No major developments in NYCC area required Habitat Regs work.	NYCC Ecology team to comment on relevant planning applications and ensure that an Appropriate Assessment is submitted.	
Recreation and tourism Quantify the current levels of site usage and assess against conservation objectives. Raise awareness of potential impacts, consistent with SMA and Heritage coast objectives.	Obtain baseline information on extent of and monitor trends for water-based activities affecting site.	No progress due to lack of co-ordination and pressure on internal resources, particularly officer time.	Agree joint working with other competent authorities (Scarborough BC and East Riding of Yorkshire C). Collect baseline information. Make assessments of impacts for each activity. Agree review period.	Review at end of plan period.
Recreation and tourism	Obtain baseline information on extent of and monitor trends for land-based activities affecting site.	No progress due to lack of co-ordination and pressure on internal resources, particularly officer time.	Agree joint working with other competent authorities (Scarborough BC and East Riding of Yorkshire C). Collect baseline information. Make assessments of impacts for each activity. Agree review period.	Review at end of plan period.

SAC Management Group – 09/10 & 10/11

Management Rationale	Management Solution	Progress during 2009/11 & 2010/11	Future Timetable	Review of Management Action/Timescale etc.
<p>Recreation and tourism Quantify the current levels of site usage and assess against conservation objectives. Raise awareness of potential impacts, consistent with SMA and Heritage coast objectives.</p>	<p>Identify user groups to develop collaborative monitoring programmes which also support production of user-based ‘codes of conduct’.</p>	<p>Codes of Conduct were launched in 2008.</p>	<ul style="list-style-type: none"> ○ Continue to distribute Codes of Conduct around the Headland. ○ Ensure information is still relevant and current. 	<p>March 2012</p>
<p>Research and education Raise awareness of site’s importance to visiting research and educational groups.</p>	<p>Provide information on the importance of the site using existing mechanisms, wherever possible, and/or new initiatives e.g. website, leaflets.</p>	<ul style="list-style-type: none"> ○ Flamborough Head Storyboard project completed through Environmental Assets Group. ○ Flamborough Head SAC website launched. ○ No Take Zone signs installed. 	<ul style="list-style-type: none"> ○ More No Take Zone signs planned for local boat launching sites. ○ No Take Zone/ Marine Conservation Zone information leaflet. ○ The website is reviewed at least twice a month. 	<p>March 2012</p>

Scarborough Borough Council ongoing actions – 09/10 & 10/11

Management Rationale	Management Solution	Progress during 2009/10 & 2010/11	Future Timetable	Review of Management Action/Timescale etc.
Energy industries Currently offshore.	Ensure the Emergency planning team are aware of the Flamborough Head management plan and understand the implications of it in relation to their work.	MMO are the responsible authority for offshore planning. Applications for windfarms have been limited to Filey.		Ongoing.
Planning and development As competent authorities the LPAs will comply with the EU Birds & Habitats Directives in planning and carrying out all of their regulatory and operational activities.	Application of the Habitats Regs to plans and projects requiring consent.	Compliance with EU Habitats Regulations have been applied to plans and projects requiring consent from the authority in this period.	Amendments to EU Habitats Regulations will monitored and applied to plans and projects requiring consent from the authority in future.	Ongoing.
Planning and development	Use management plan to inform SBC Local Development Framework.	The Flamborough Head Management Plan has been used to inform the SBC LDF.	Currently awaiting guidance from Central Government regarding the future of LDFs.	Ongoing.
Recreation and tourism Quantify the current levels of site usage and assess against conservation objectives. Raise awareness of potential impacts, consistent with SMA and Heritage coast objectives.	Obtain baseline information on extent of and monitor trends for water-based activities affecting site.	Bulk of area outside of the Scarborough Borough.	Bulk of area outside of the Scarborough Borough.	
Recreation and tourism	Obtain baseline information on extent of and monitor trends for land-based activities affecting site.	Bulk of area outside of the Scarborough Borough.	Bulk of area outside of the Scarborough Borough.	
Shipping, navigation and deposits at sea Identify monitoring programmes to assess any potential impacts on interest features as part of ongoing activity.	Emergency Contingency Plan in event of pollution incident.	Head of Environmental Services in conjunction with North Yorkshire County Council in possession of emergency plan.	Head of Environmental Services in conjunction with North Yorkshire County Council responsible for update of emergency plans.	Ongoing.

Management Rationale	Management Solution	Progress during 2009/10 & 2010/11	Future Timetable	Review of Management Action/Timescale etc.
Shoreline management Integration of adjacent SMP policies and review against conservation objectives/ Habitats Regulations.	NECAG SMP review of management objectives	Cell 1 Coastal monitoring of erosion and geological phenomena continued. SMP NAI policy upheld along adjacent cliffs.	Filey Strategy due for review.	Review scheduled for 2013.
Shoreline management	Apply Habitats Regs to plans and projects within or adjacent to the site	No plans or projects proposed on SBC side of Flamborough Head Management Area.	SBC hoping to draw down funds from ERDF for climate change/ habitat creation programme.	Submission deadline 2013.

11. ANNEX D – Action Plan amendments

Management solutions (Activities not in priority)	Management solutions See 'F' list	Targets/measures	Implementation	Period					
				2006/ 2007	2007/ 2008	2008/ 2009	2009/ 2010	2010/ 2011	2011/ 2012
3. Fishing and aquaculture Use existing baseline information, where available, to develop an ongoing monitoring programme in order to identify any impact on reef interest features within the site.	F6- Assess the potential impact of demersal trawling.	Establish a baseline design-monitoring programme.	NE, NESFC and trawling industry		✓	✓	-		✓

Key: Red ✓ and → indicate a new target has been set.

12. ANNEX E – Survey and monitoring of the condition of interest features, action plan update for the financial period 2009/10 & 2010/11

Natural England

Monitor and Review	Attribute	Actions and Targets	Progress during 2009/10 & 2010/11	Future Timetable	Review of Management Action/Timescale etc.
<p>Condition monitoring Site condition monitoring of internationally important reef habitats, as set out in favourable condition table.</p>	<p>Monitor changes in extent of reef features for whole site.</p> <p>Sub-feature rocky shores Distribution and range of all intertidal and characteristic biotopes.</p> <p>Sub-feature kelp forest Distribution and range of kelp biotopes, presence and abundance of composite and characteristic species.</p> <p>Sub-feature subtidal faunal turf communities Distribution and range of subtidal faunal turf, biotopes, presence and abundance of composite and characteristic species.</p>	<p>Area of the sublittoral reef to checked, based on established baseline, and assessed in relation to rocky shore information.</p> <p>Establish baseline map & monitoring transects.</p> <p>Use transects above to record any change.</p> <p>Using baseline acoustic maps & water quality information identify monitoring sites.</p> <p>Using monitoring sites above record any change.</p> <p>Using baseline acoustic maps and site usage information identify monitoring sites.</p> <p>Using monitoring sites above record any change.</p>	<p>Monitoring of the sublittoral reef features was completed during 2010/11. This survey was completed in partnership with ERYC. The survey work was completed in March 2011, with the report due in April 2011.</p> <p>Natural England commissioned IECS, at Hull University, to complete Intertidal survey work around the Headland, throughout August-September 2010. This was a repeat survey of 8 monitoring transects around Flamborough Head, first surveyed by Howson in 2001. The purpose of the survey was to provide an assessment of the intertidal reef feature. No significant changes were noted and the intertidal area is considered to be Favourable. This report is available on request.</p> <p>Due to budget constraints, the sub-feature kelp forests will be monitored during 2012/13.</p> <p>Due to budget constraints, the sub-feature subtidal turf communities will be monitored during 2012/13.</p>	<p>This will be checked against the established baseline of the reef feature in 2011/12.</p>	<p>Monitoring of the kelp forest will be pushed forward to 2012/13.</p> <p>Monitoring of the subtidal faunal turf communities will be pushed forward to 2012/13.</p>

Monitor and Review	Attribute	Actions and Targets	Progress during 2009/10 & 2010/11	Future Timetable	Review of Management Action/Timescale etc.
<p>Condition monitoring Site condition monitoring of internationally important sea cave habitats, as set out in favourable condition table.</p>	<p>Monitor changes in extent of sea cave features for whole site.</p> <p>Sub-feature microalgal and lichen communities</p> <p>Sub-feature faunal cushion and crust communities</p>	<p>Use monitoring sites to record any change.</p> <p>As above.</p> <p>As above.</p>	<p>Natural England commissioned Sea-Scope, Marine Environmental Consultants, to carry out an assessment of the sea caves between the 26th and 30th July. The aim of the study was to repeat, and add to, a baseline survey performed in 2000. 171 previously un-surveyed caves were studied, giving a total number of caves around the headland in excess of 326.</p>		
<p>Condition monitoring Site condition monitoring of internationally important vegetated sea cliff habitats, as set out in favourable condition table.</p>	<p>Monitor changes in extent of vegetated sea cliff features for whole site.</p> <p>Sub-feature vegetation communities Species composition of characteristic maritime/paramaritime/seabird/chalk/boulder clay and wet flush influence.</p>	<p>Use monitoring sites to record any change.</p> <p>Use monitoring sites to record any change.</p>	<p>Natural England commissioned the North and East Yorkshire Ecological Data Centre and JBA Consulting to complete a survey of the maritime cliffs and slopes throughout August - September 2010. The purpose of the survey was to repeat the Milliken and Pendry, 2002 survey, to see if there were any noticeable changes in conservation status. Phase 1 habitat mapping was completed throughout the whole SSSI and Phase 2 habitat mapping was completed in those areas classed as sensitive (see Figure 1). No significant changes were noted and the site has been classed as Favourable, when compared to the conservation objectives for the area.</p>		
<p>Condition monitoring Site condition monitoring of internationally important breeding seabird habitats, as set out in favourable condition table.</p>	<p>Monitor changes in extent of suitable cliff habitat for breeding seabirds and populations.</p>	<p>Use monitoring sites to record any change.</p> <p>Use annual productivity of key species e.g. kittiwake and gannet, as an indicator of breeding success.</p>			

Figure 1:

